

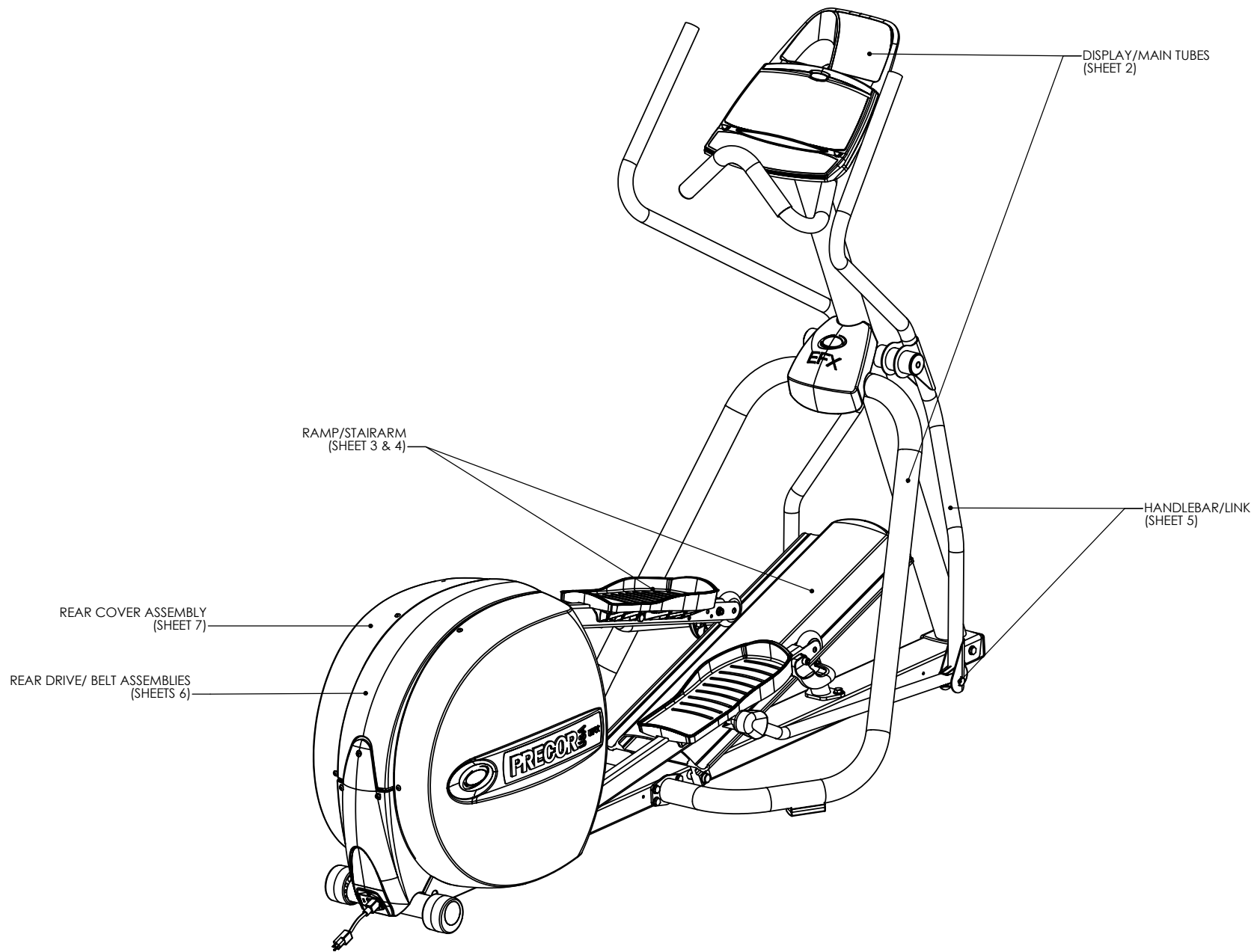
**5.19 (serial code QY, SJ)**

<b>Part Number</b>	<b>Description</b>	<b>Bubble Number</b>
44337-108	WLDMT, LWR FRM, 5.19,RTL EFX, THD,	1
46920-108	ASSY, UPCA & SW, 5.19 TD	4
46975-101	DISPLAY, ASSEMBLY, 5.19	6
44905-012	ASSY,CBL,MOD,8P8C,1-1,12"	7
44905-072	ASSY,CBL,MOD,8P8C,1-1,72"	8
43599-508	PCA,EFX,LWR,SERIAL	9
47495-102	PCA, EFX, LOWER, SERIAL W/O LIFT	9
48283-101	ASSY, LOWER PCA & SW, EFX 5.19/5.33	9
44458-503	ASSY,PCA&SW,5.33,LWR	9.01
44439-101	ASSEMBLY, REED SWITCH,34.5"	11
46863-101	ASSY, HANDLEBAR, LEFT, 5.19	21
46863-102	ASSY, HANDLEBAR, RIGHT, 5.19	22
10392-111	POWER CORD,125VAC,10A,8.0 FT	23
12167-102	PWR ENTRY MOD & FILTER,250VAC,3A	24
45201-202	IC,CPU,PGMD,EFX5.33,LWR,V2.02	27
11415-101	COUPLER,MOD,8P8C,INLINE	29
43329-102	WIRE FORM,PLASTIC,COMMERCIAL	36
46833-101	WELD, DISPLAY TUBE, 5.19,PT	37
44318-104	WELD,MAIN TUBE,RIGHT,RETAIL EFX,PT	42
44318-103	WELD,MAIN TUBE,LEFT,RETAIL EFX,PT	43
44333-103	ASSY, RAMP, LIFT BRKT, RETAIL EFX	45
46855-104	WELDMENT,STAIRARM RAIL,5.19, EFX,RH	47
47029-102	ASSY, STAIRARM, RIGHT,5.19	47
46855-103	WELDMENT,STAIRARM RAIL,5.19, EFX,LH	48
47029-101	ASSY, STAIRARM, LEFT,5.19	48
46922-101	ASSY, STAIRARM WHEEL, CONSUMER EFX	49
48337-101	ASSY, STAIRARM WHEEL, CONSUMER EFX,	49
37314-108	PEDAL, FOOT	50
46996-102	ASSY, LOWER LINK, 5.19	54
44363-103	ASSEMBLY, CRANK ARM, RETAIL, W/PRES	58
10217-130	BELT, DRIVE, POLY V (DAYCO 27-0628)	62
44301-101	ASSY, STEP-UP PULLEY,RETAIL EFX,5X3	63
10217-131	BELT, DRIVE, POLY V (DAYCO 27-0627)	64
39314-101	ELECTROMAGNET,EC BRAKE,	66
44471-104	ASSY,DRIVE WELDNT, RETAIL EFX	75
43606-110	ASSY, EFX COVER, RIGHT 5.19/5.17I	76
43606-109	ASSY, EFX COVER, LEFT, 5.19	77
44479-101	ASSY, FRONT PANEL, EFX COVER, REAR	78
43707-102	SUPPORT, REAR COVER,CHARCOAL GRAY	79
46839-101	TRANSITION, REAR COVER, EFX, CHARCO	80
46837-101	LABEL, EFX COVER, REAR,5.19/5.17I	81
46964-101	LABEL,LOGO,ELIPSE,5.17I/5.19,RETAIL	82
46838-102	LABEL, WIRING DIAGRAM, 5.19	83
43179-103	BACKPLATE, DISPLAY, COMMERCIAL, CHA	85
11406-103	FOOT, LEVELER, RUBBER BASE, 1.5"LG	86
37534-102	FOOT, ADJUSTABLE	87
37535-102	FOOT, FIXED	88
38301-101	ASSY,PIVOT BLOCK	89
44480-102	ASSY, TOP PANEL, EFX COVER, REAR	90
12223-400	FUSE,TIME-DELAY,4A,250V,5X20MM	93

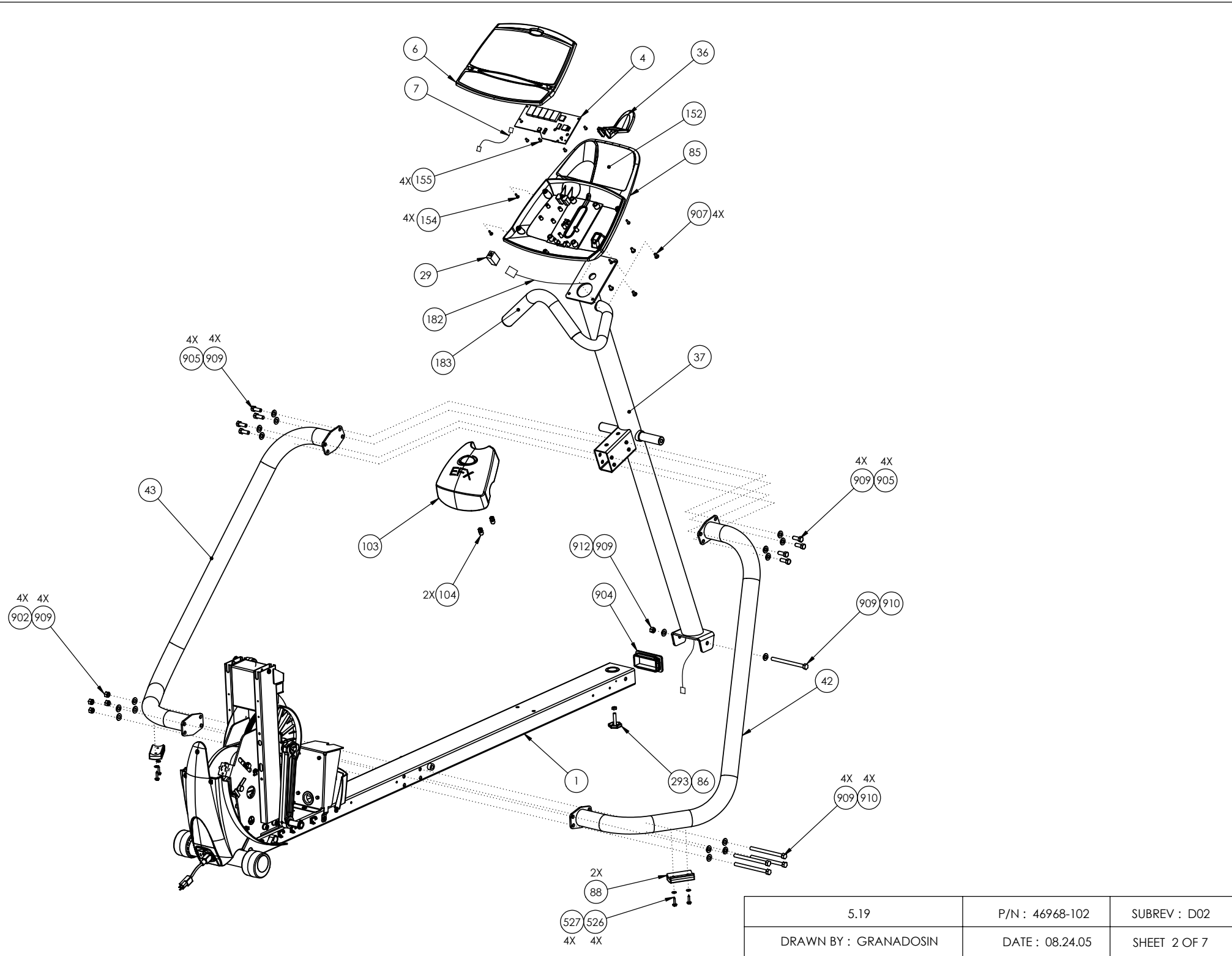
11075-105	FUSE,2.00A,250VAC,SLOW,RADIAL	94
44300-103	ASSY,DRIVE INPUT,RETAIL	97
38320-103	IDLER,PULLEY	98
12153-101	FERRITE,CLAMP-ON,RND CABLE,28 MATL	102
47150-101	ASSY, EFX COVER, CENTER, 5.19	103
12500-101	CLIP, TREE-LOK, STD. BALL END	104
46893-101	LABEL,ACCESSORY TRAY,ENG,5.19	152
PMKN016-050	SCREW,TCS,#8X1/2,PHIL,BLK ZN,TYPE25	154
MGCN016-038	SCREW,MCH,8-32X3/8,PANHD,PHIL,	155
38580-107	GRIP,HANDLEBAR,27.00" LONG	156
44905-060	ASSY,CBL,MOD,8P8C,1-1,60"	182
38580-114	GRIP,HANDLEBAR, 14" LONG	183
10123-105	CABLE TIE, 6 LONG,WHITE,NYLON	184
11476-102	PIN, RING, LOCKOUT	202
CBKN019-050	SCREW,SKHD,#10X32X0.50,BLK ZN,LK	203
PKCN019-075	SCREW,S/T,#10X.75,WSHHXHD,ZN	203
WATNN020-002	WASHER, LK-INT, #10, ID=.200,	204
10136-103	CLIP,U TYPE, TINNEMAN, 1/4-20	252
48340-101	SPACER, RAIL, URETHANE	276
TENE006-010	SCREW,BTTNHD,SKT C/S,M6X1X10MM	277
KDKN031-025	LOCKNUT, HALF, 5/16-18,BLK ZN	278
KAKN031-016	LOCKNUT,HALF, 5/16-18,BLK ZINC	279
RAKN031-200	SCREW,SHLDR,3/8 X 2 ,HEX	280
HAKN031-200	SCREW, HEX HD, 5/16-18 X 2, BLK ZN	281
TAKN031-200	SCREW,BTHD,5/16-18X2,BLK ZN	281
46963-103	HOOK, STAIR RAIL, 5.19, LH	282
46963-104	HOOK, STAIR RAIL, 5.19, RH	283
47773-101	HOOK, STAIRARM, 5.33, RH	283
WBKN031-007	WASHER, FLT, 5/16, ID=.344,	284
CAKN031-200	SCREW,SKHD,5/16-18X2,BLK ZN,LK	285
47024-101	COVER, LINK, REAR, 5.19	286
PGKN016-075	SCREW,S/T,#8X3/4,TRS,PHIL,BLK	287
RAKN038-063	SCREW,SHLD,3/8 X 5/8 ,HEXSC,BLK ZN	288
WAAKN050-006	WASHER,FLT,1/2X1.00X.063,BLK ZN	289
WAGNN050-001	WASHER,WAVE (SSR-0075)	290
47023-101	COVER, LINK, FRONT, 5.19	291
MGKN013-075	SCREW,MCH,6-32X3/4,PANHD,PHIL,BLK Z	292
KPCN031-019	NUT,HEX THIN,5/16-18,ZN	293
48340-102	SPACER, RAIL ,URETHANE, RED	295
50593-102	ASSY, 5.19 RAMP REPLACEMENT KIT, AL	299
AAHN063-003	RING, RETAINER, 5/8, EXTERNAL	301
10178-112	BUSHING, SNAP	302
12240-101	CLAMP, CABLE	305
33984-101	LABEL, SAFETY, GROUND SYMBOL	306
HAKN038-100	SCREW,HEXHEAD,GRADE2,3/8-16X1,BLKZN	307
44386-101	COVER, RAMP FRONT, 5.33, CHARCOAL G	308
CAKN031-075	SCREW,SKHD,5/16-18X0.75,BLK ZN,LK	309
PGKN016-100	SCREW, S/T, #8 X 1, TRS, PHIL, BLK	313
TFKN025-075	SCREW,BTHD,1/4-20X3/4,BLK ZN	314
PKCN019-075	SCREW,S/T,#10X.75,WSHHXHD,ZN	315
PNKN025-050	SCREW,PANHD,PHIL,TYPEF,1/4-20X.5,BZ	316
RANN038-050	SCREW,SHLD,3/8 X 1/2 ,HEXSC	317

WBKN038-007	WASHER, FLT, 3/8, ID=.406, BLK ZN	318
WAGNN062-001	WASHER, WAVE, .87 OD X .62 ID	320
WAGNN048-001	WASHER,WAVE (SSR-0062)	321
WATNN020-002	WASHER, LK-INT, #10, ID=.200,	322
WNNN051-002	WASHER,SHIM,1/2X3/4X.020THK	324
WNNN063-001	WASHER, FLT, 5/8X.880X.010	325
WRCN031-009	WASHER,GRADE 8,3/8,13/32 ID,13/16OD	327
46869-101	WELDMENT,RAMP SUPPORT,5.19,PT	339
11245-103	BUSHING,HEAVY DUTY PILLOW BLK	351
11284-101	GROM, HORSE SHOE, (Z-16555)	352
11745-101	CLIP,SNAP-IN,NYLON,1/4 DIA	353
37385-101	BRACKET, TENSIONER	354
37855-103	TAB, LOCKING	355
39360-102	RETAINER, SENSOR	356
44402-102	NUT PLATE, EC BRAKE,EFX	357
47753-038	ASSY,CBL,PCA/MAGNET,38"	358
HACN025-250	SCREW,1/4-20X2-1/2,HEX,GR 2,ZN	359
HCRN031-075	SCREW,HEX,GR 5,5/16-18X3/4,SIL ZN	360
HRWE031-075	SCREW, SERRATED FLANGE HD, HEX, NYL	361
KGCN031-027	LOCKNUT,STARWASHER,5/16-18,1/2	362
MACN019-200	SCREW,HEX WASHER HEAD, #10-32 X 2.0	363
MGCN019-038	SCREW,PAN HEAD,MACHINE;10-24 X3/8	364
WAGSN072-001	WASHER, WAVE .1.05 O.D., .755	365
WNNN032-009	WASHER,FLT, .321X1.00X.090 THK	367
WBANN034-013	WASHER,FLAT,ID=11/32,OD3/4,TH=.125,	368
WNNN076-001	WASHER,SHIM, .75X1.00X.010 THK	369
WRCN031-009	WASHER,GRADE 8,3/8,13/32 ID,13/16OD	370
PKCN019-050	SCREW,S/T,#10X1/2,WSHHXHD,ZN	371
11366-101	HOLDER,CABLE TIE	372
12103-101	CLAMP,CABLE,VINYL COATED	373
37436-101	LABEL, CHASIS NEUTRAL	401
44435-021	ASSY,CBL,2-COND,18AWG,21",QK DISC	402
44437-013	ASSY, CABLE, GND,RING/QK DISC,13"	403
MNCN013-031	SCREW, MCH,6-32X5/16,FLTHD,PHIL	404
PKCN019-075	SCREW,S/T,#10X.75,WSHHXHD,ZN	526
WBCN019-005	WASHER, SAE, #10, ZN	527
11745-101	CLIP,SNAP-IN,NYLON,1/4 DIA	551
43930-101	BRACKET, PCA, EFX, PT	552
MGCN016-063	SCREW,MCH,8-32X5/8,PANHD,PHIL,	553
MGCN016-075	SCREW,MCH,8-32X3/4,PANHD,PHIL,	555
WATNN017-002	WASHER, LK-INT, #8, ID=.170,	556
43932-101	BRACKET REPLACEMENT, PCA, EFX, PAIN	558
44435-024	ASSY, CABLE, 2-COND, 18 AWG, 24", Q	559
11382-103	CAP,TUBE,PLASTIC,ROUND,1.750 INCH	902
10186-102	WRENCH, ALLEN, 1/4	903
11311-101	ENDCAP, REC TUBE, BLACK PLASTIC, 50	904
HAKN038-100	SCREW,HEXHEAD,GRADE2,3/8-16X1,BLKZN	905
MGKN025-050	SCREW, PANHD, 1/4-20 X .5, BLK ZN	907
TFKN025-075	SCREW,BTHD,1/4-20X3/4,BLK ZN	908
WBKN038-007	WASHER, FLT, 3/8, ID=.406, BLK ZN	909
HAKN038-500	SCREW,HEXHEAD,GRD2, 3/8-16X5,BLK ZN	910
HCRN038-100	SCREW,HEX,GR 5,3/8-16X1,SIL ZN	911

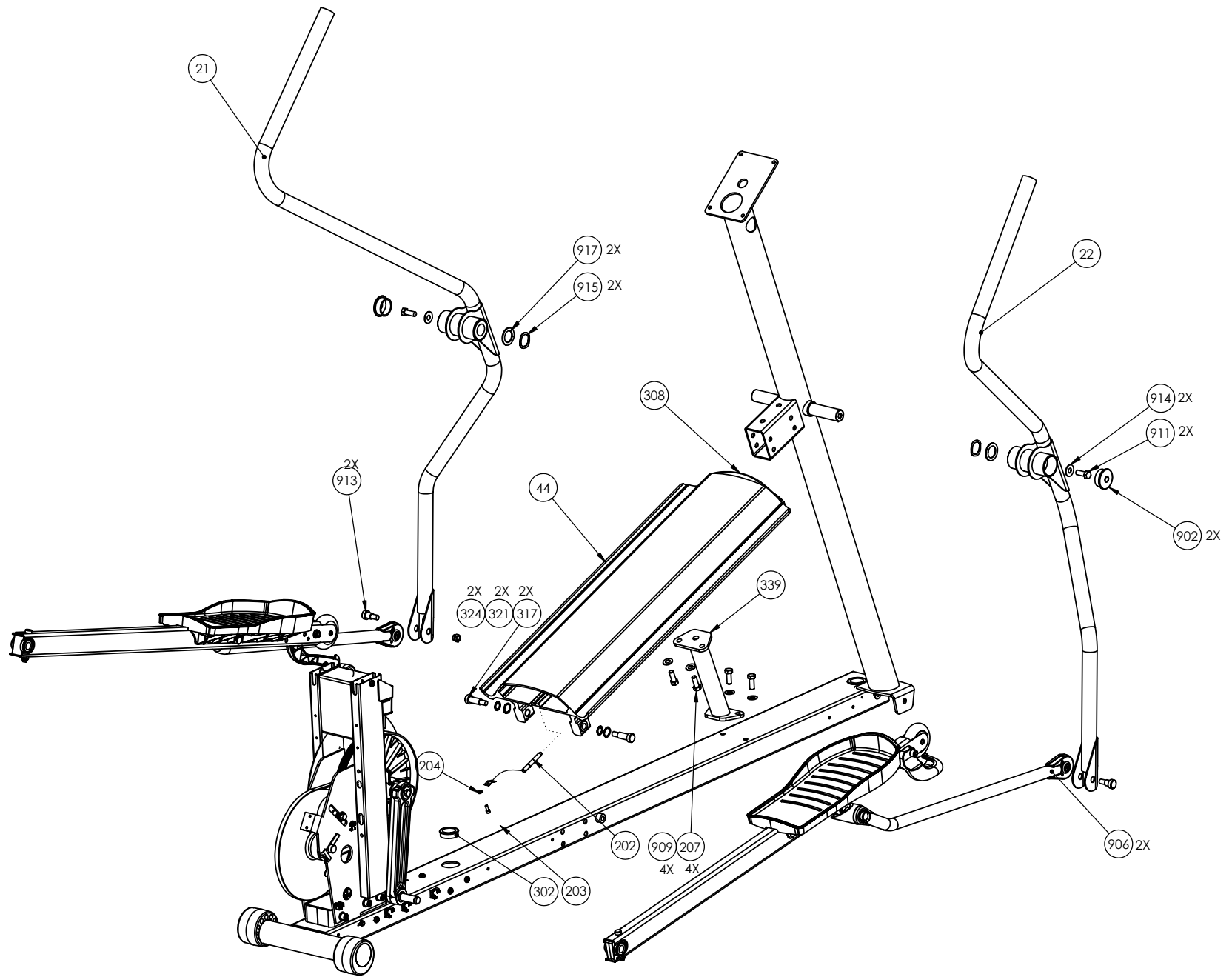
KDKN038-044	LOCKNUT,FULL,3/8-16,.433,BLK ZN	912
RAKN038-125	SCREW,SHLD,3/8X1-1/4,HEXSC,BLK ZN	913
WABCN041-005	WASHER, FEN, 3/8, ID=.406,	914
WAHNN105-002	WASHER, WAVE, 1.351 OD X 1.051	915
WALKN050-013	WASHER, SPLIT LOCK 1/2,BLK ZN	916
WNKN102-008	WASHER,FLT,1 1/2X1.015X.075,BLK ZN	917
46829-102	KIT, LITERATURE, 5.19	999



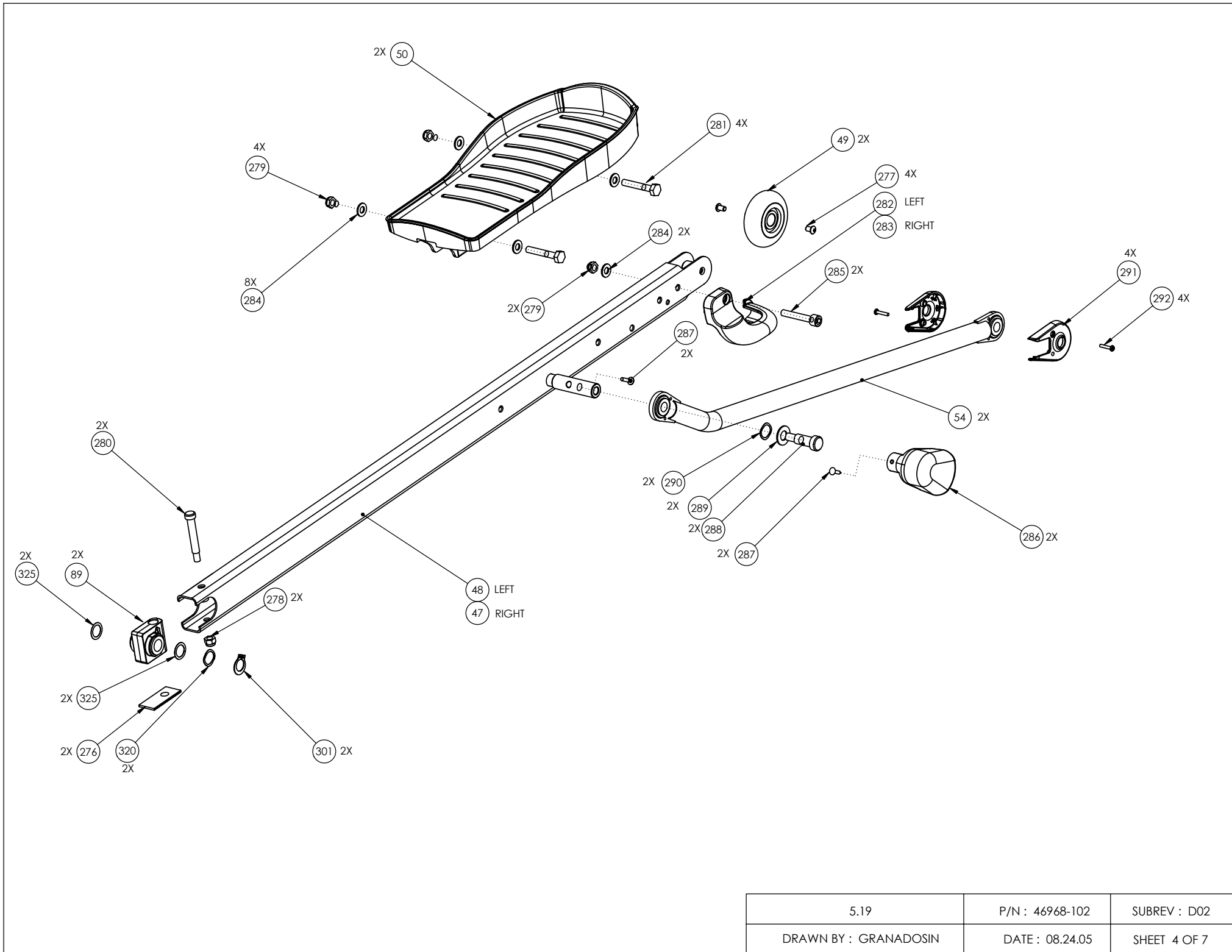
5.19	P/N : 46968-102	SUBREV : D02
DRAWN BY : GRANADOSIN	DATE : 08.24.05	SHEET 1 OF 7



5.19	P/N : 46968-102	SUBREV : D02
DRAWN BY : GRANADOSIN	DATE : 08.24.05	SHEET 2 OF 7

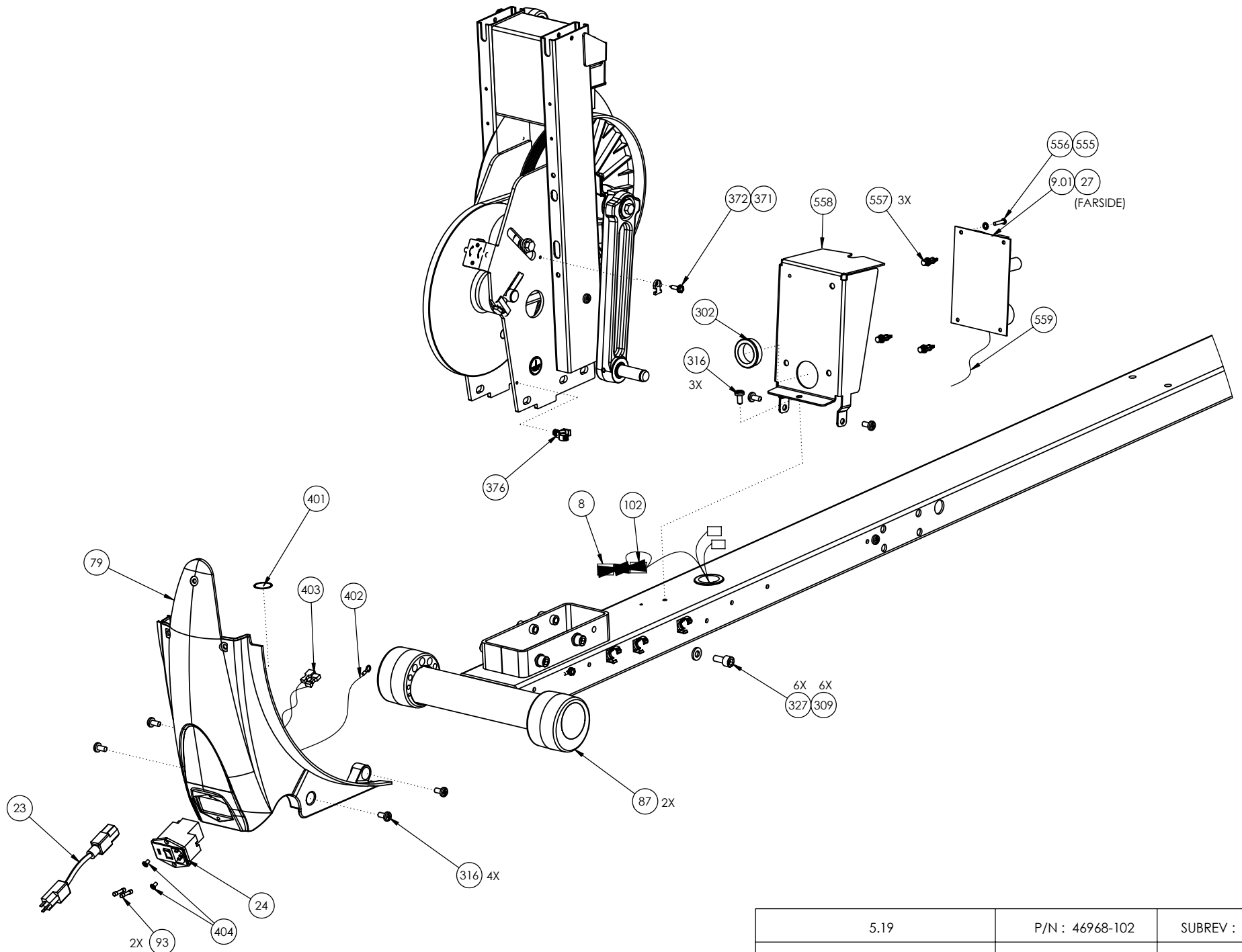


5.19	P/N : 46968-102	SUBREV : D02
DRAWN BY : GRANADOSIN	DATE : 08.24.05	SHEET 3 OF 7

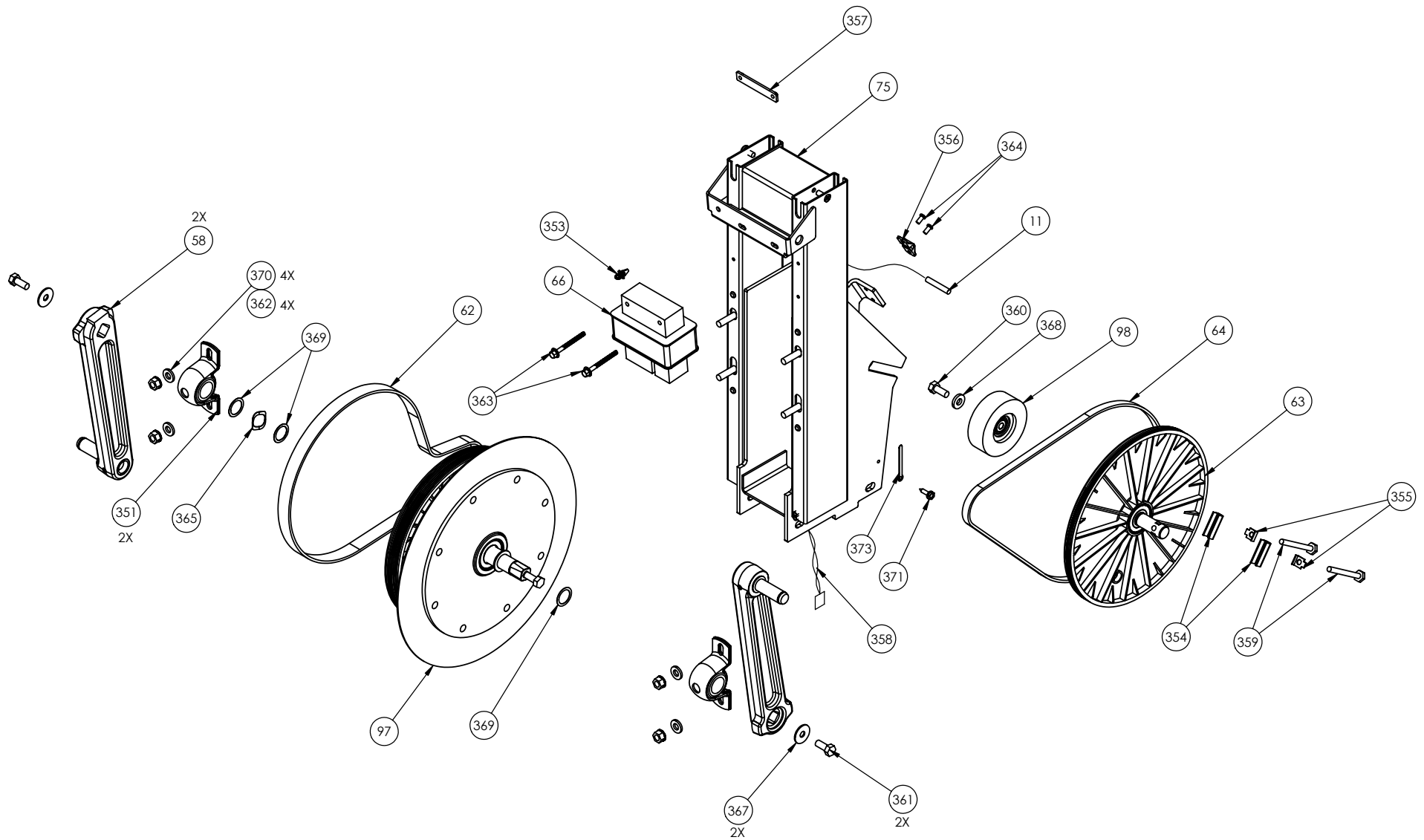


5.19	P/N : 46968-102	SUBREV : D02
DRAWN BY : GRANADOSIN	DATE : 08.24.05	SHEET 4 OF 7

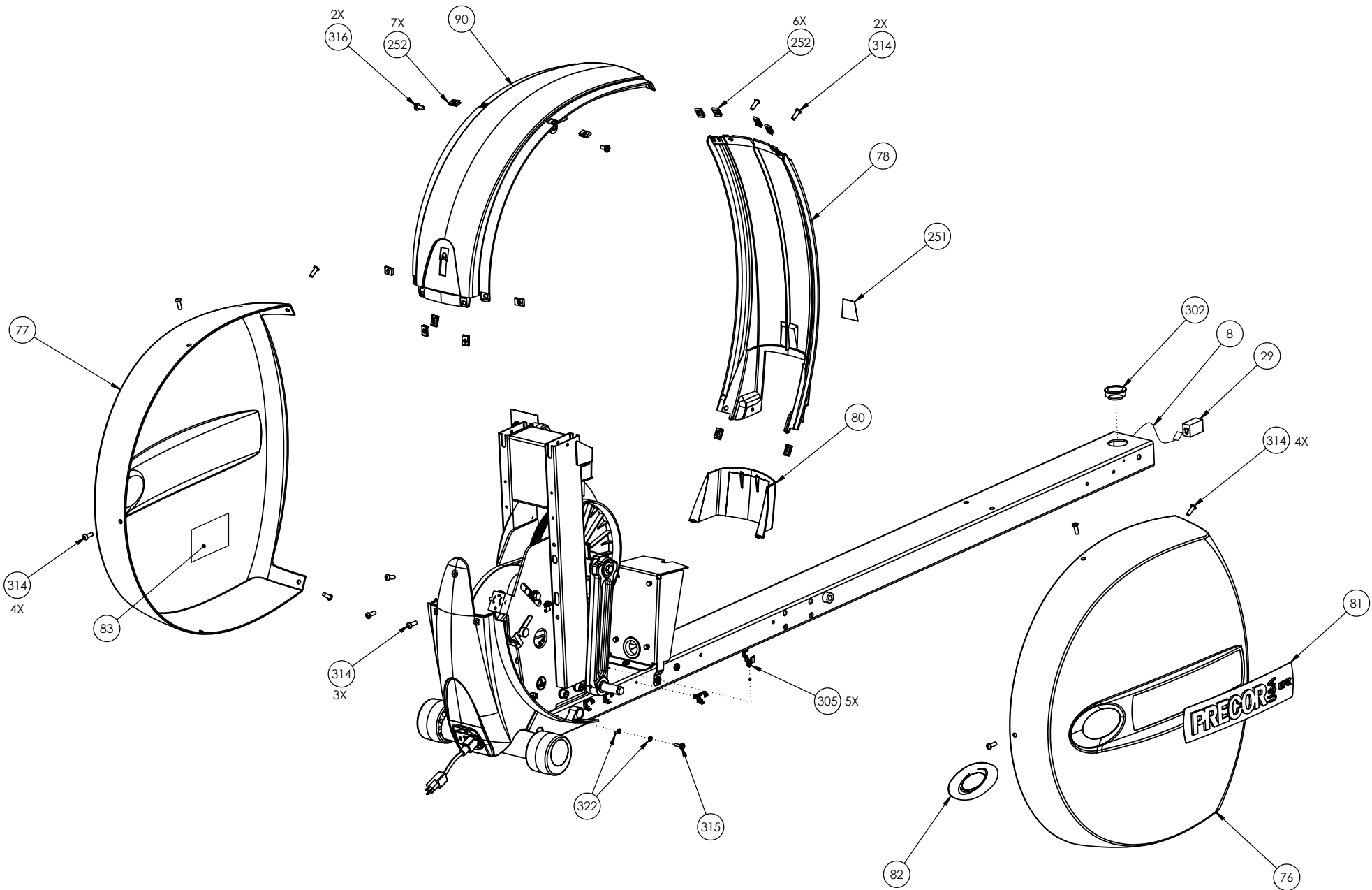




5.19	P/N : 46968-102	SUBREV : D02
DRAWN BY : GRANADOSIN	DATE : 08.24.05	SHEET 5 OF 7



5.19	P/N : 46968-102	SUBREV : D02
DRAWN BY : GRANADOSIN	DATE : 08.24.05	SHEET 6 OF 7



5.19	P/N : 46968-102	SUBREV : D02
DRAWN BY : GRANADOSIN	DATE : 08.24.05	SHEET 7 OF 7